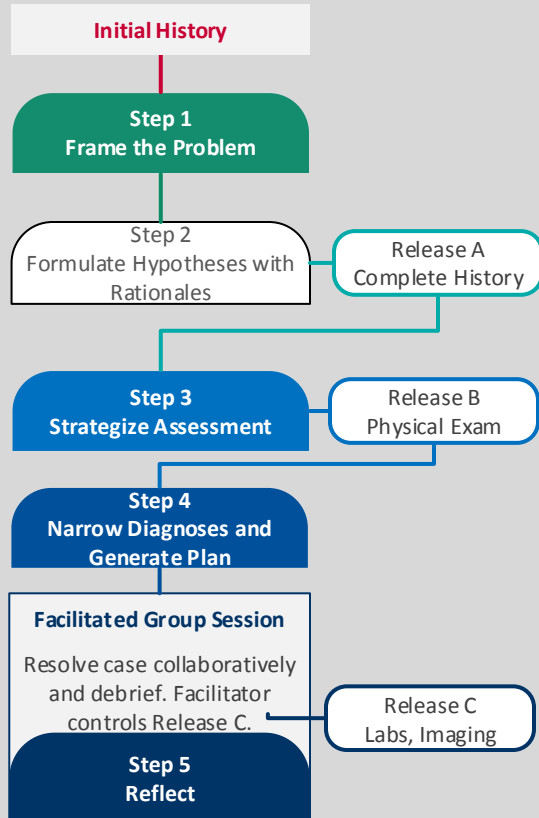


Online Tools for Clinical Reasoning through Case-based Instruction

BEFORE THE SESSION



We will use the new version of ThinkShare® (thinkshareapp.com) for...

ThinkShare®



My Account
Logout

2-Session cases

- **Review Initial History**
- **Submit** ideas for **Step 1** and **Step 2** in a single entry BEFORE Session 1
- **Group Session 1!**
- Obtain/Discuss **Releases A & B**
- Identify learning issues at close of Session 1
- **Group Session 2!**
- Share what you learned in between sessions
- Obtain/Discuss **Release C** and resolve the case
- Debrief as a group after resolving case
- **Submit post-case reflection** at the close of Session 2

Single Session Cases

- **Review Initial History**
- Submit **Step 1** and **Step 2** in separate entries
- Review complete history (**Release A**)
- Submit **Step 3**
- Review findings on physical exam (**Release B**)
- Submit **Step 4** - Identify questions for discussion
- **GROUP SESSION!**
- Obtain/Discuss **Release C** and resolve the case
- Debrief as a group after resolving case
- Submit post-case reflection (**Step 5**) at end of session

Brainstorm the new case if there's time!

More about Clinical Reasoning Course methods and tools: fid.medicine.arizona.edu

Scan QR code →



Inquiry Strategies for a Reflective Approach to Medical Problem-solving

Question the Process

- How do I know that?
- What else do I need to know?
- How could/should I find out?
- How will it help me to differentiate from among the possible diagnoses?
- Is there another approach I/we can take?
- Are these problems due to a single cause? Multiple causes? Multiple related causes?
- How can I/we narrow POSSIBLE causes to highly PLAUSIBLE or PROBABLE causes?

Question the Case

- Are these problems due to a single cause? Multiple causes? Multiple related causes?
- Which facts support my conclusions?
- Which facts do not support my conclusions? Should this cause me to continue investigating? Why? Why not?

Question Perspectives

- Have I/we framed the inquiry in a way that helps or hinders us from reaching a conclusion supported by evidence?
- How could I/we (re)frame the problem?
- How could I/we reframe the question?
- Am I/are we biased in some way?
- What assumptions am I/are we making?
- What kind of questions should I/we be asking?

Question How to Approach Future Cases

- What have I learned from my approach in past cases?
- How can problem-solving in past cases help me take an effective approach to the current case?
- Have I/we made any cognitive errors? What are they?
- How/why did I/we make those errors?
- How/why could I/we avoid these in future cases?